

## Everyone loves a party!

This month we celebrated the King's coronation in style, with the Uketeers providing just the right tone, a little dancing, some singing, lots of cake (of course - thanks to our volunteer bakers), some summer punch, and a topical music quiz (thanks Sheelagh!). A big shout out to Pam, Lorraine, Jackie and Judi for your hard work. I think we all had a fabulous afternoon! Unfortunately there aren't many pictures, as the photographer was too busy enjoying herself!



### April's activities

But what else have we been up to? Find out about our artist-in-residence, trips to Wheelbirks and the Errington Coffee House, and much more...

## News from the board

Hello Everyone!

Well at last we have some warmth in the air! That cold easterly wind lasted too long. I think the land has really welcomed the warmth; the countryside looks lovely and green now and the plants and grass are growing (more mowing needed!!).

On a personal note, I now have my horses home; because they are 'jumpers' they only run in the winter months. They are looking really well with their summer coats coming through and are enjoying the warmth, their holidays and the grass.

Chrysalis has had a great couple of months - the party and the trips lift everyone's spirits I hope. It is nice to be able to do 'normal' things with just a little bit of back-up. I would like to take this opportunity to thank everyone who puts so much effort in, to make Chrysalis a great place to come to. This includes tutors, volunteers, trustees, Janet who plans and runs the trips, Mel who supports the carers and caretakes and administrates the premises and of course Gina our Lead Co-ordinator who pulls everything together. Everyone's dedication is a joy and makes Chrysalis a special place. Visitors often mention what a lovely atmosphere the Centre has.

After all our efforts we were not successful in the large funding bid, which was disappointing. The reason they gave was we had too high reserves. This is mostly my fault as I am very cautious with money! When you have people employed, and rent and utilities to pay each month, I like to feel we have a good 'safety net' but maybe I have been too cautious this time! The trustees are planning a strategy day soon so the subject will need to be discussed thoroughly then.

We are progressing with the organisation of the fundraising book event Summer Tyne Crime. The tickets are now available and several have been sold already; please spread the word and see the enclosed poster. We have some brilliant prizes for the raffle (the local businesses have been so generous), there will be a book signing and an auction. It is a great opportunity for Chrysalis, so we are working hard to try and make it as successful as possible.

We also have a 'bag pack' opportunity at Tesco at the end of June so I will be on the lookout for volunteers – watch out! If you think you could give us a couple of hours or you have some children or grandchildren you think would be willing to help please let us know.

Enjoy the nice weather – we might be brave enough to get the bedding plants and hanging baskets out soon!

Rosie x

## Activities

Here's a selection of photos from gardening and sport in April...check out the smiles and the concentration...

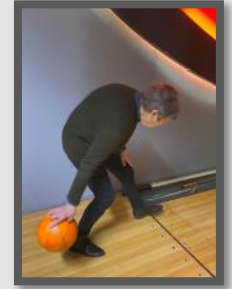


## Trips

We've had two lovely outings in April: 10 pin bowling at the Wentworth, and a visit to the Forum to see "My Everest".



There's quite a bit coming up too, so go and get your diary and make a note of those that you'd like to join us for!



### **Queens Hall - Tuesday 16th May**

This is our "behind the scenes" event. It is hopefully the first of many trips to our local theatre, with drama productions and art workshops lined up in the future. This visit is to introduce us to the

theatre and give us a look behind the scenes. It will be followed by lunch in the White Room within the theatre - which we will have to ourselves.

### **Walk at Tyne Green - Tuesday 23rd May at 2pm**

We'll be meeting at Cafe Enna, with the options of going for a walk, which will be led by some of our lovely volunteers, or just come into the cafe for a cuppa.

### **Forum Cinema - The Unlikely Pilgrimage of Harold Fry - Friday 26th May**

This sounds like a great film - and features Northumberland, so we will hopefully spot lots of places that we know.



### **Visit the Alpacas - Friday 16th June**

We had two alpacas visit us last year, and now it's our turn to visit them. They live at the top of Allendale Road in Hexham; we will go into their field, where there will be benches for us to sit on, and have the chance to hand feed them. There will be newborn baby alpacas too (known as Cria) - I'm sure they will be incredibly cute! This will be followed by the customary coffee and cake that is a very important feature in all our trips! In the event of bad weather, we can be in the barn for the whole time, and the alpacas will be brought in there. The venue is wheelchair friendly.

### **Beamish - Tuesday 4th July**

Beamish is a huge museum, so this trip would focus on a smaller area. We'll need to book a coach, so if you could let me know ASAP if you are interested (no obligation) that would be fab!

**Please get in touch if you would like to come along to any of these events - and feel free to ask if there's any further information you need. Janet xx**

## Summer Tyne Crime



Thursday July 6th  
7:00 for 7:30



# Summer Tyne Crime

Charity Book Evening



**Mari Hannah and  
Ann Cleeves**  
in conversation



hosted by TV's Chris Jackson  
at Hexham Mart Function Suite

Tickets £18 on sale now

To book your tickets visit our website  
[www.chrysalisclub.org.uk](http://www.chrysalisclub.org.uk)  
or contact  
[admin@chrysalisclub.org.uk](mailto:admin@chrysalisclub.org.uk)  
07760 124 539

## Artist in residence

A couple of months ago, Carl von Weiler ran a number of workshops for us on the theme of Desert Islands and Driftwood Boats, resulting in a portable art installation which is currently on display at Chrysalis. The sessions provoked ideas and reminiscences on music and the past, as well as being creative and stimulating. We used air-drying clay, and items collected from the beach including driftwood, shells and some flotsam and jetsam (well, some odds and ends that could have been found on



the beach!). Carl is a professional artist, with a fabulous range of experience - to find out more check out the back page! And look out for the "Art" sessions that are planned throughout June and July, where Carl will be running workshops on painting clouds and trees.



## Activities and comments

Here's some more photos from music making with Gary and singing with Ian...



### Comments about Chrysalis

“I hadn't realised what how much you do for the carers too”

“Thank you for all your kind support with my family. Especially my dad.”

“This team is amazing, they truly make a difference.”

“Thank you for organising the coronation party - it was excellent!”

“It really is a wonderful place. We have a super time on a Monday with lots of laughs.”

“I highly recommend Chrysalis Club. Lovely place and lovely people.”

“We all have a wonderful time at Chrysalis”

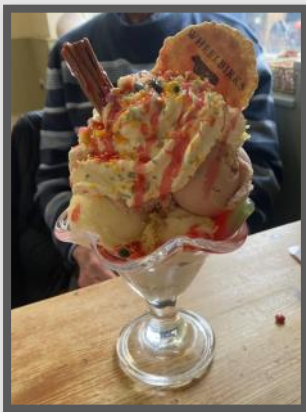
## Trips!

### Errington Coffee House

We recently had the radiators renewed at our premises which is wonderful news but meant that we weren't able to hold an activities session on Thursday 13 April, so it was a good excuse to take a trip out instead!



We reserved a private area at Errington Coffee House just outside Corbridge and close to Hadrian's Wall, and a group of us arrived in the rain and cold... real April showers! Luckily the fire was lit for us and we had a very warm welcome from the Errington team. We all enjoyed a cuppa and some cake and a good catch up, and we managed to get a few games of dominoes in too! It was one of our member's birthdays that week so we had a wonderful time celebrating together and singing happy birthday.



### Wheelbirks Parlour Trip

The Chrysalis Prudhoe group enjoyed a lovely trip to Wheelbirks Parlour near Stocksfield on a rather gray and drizzly morning on 28th March. Wheelbirks kindly reserved us a section all to ourselves and we tucked into a wonderful selection of cakes and scones. Some of us enjoyed a warming hot chocolate and we even tried an ice cream sundae which was a brave choice on a chilly spring day!

There was a lovely little shop inside Wheelbirks so we had a look around at all the pretty Easter things there. Then we put our coats on, dodged the rain and went into the barn next door to pet their two donkeys, Hamish and Dougie. They were



really friendly and enjoyed all the fuss! We had a great time chatting and catching up with our friends and look forward to another trip there in future.





## Fundraising



Chrysalis Club  
Tynedale

### Looking for a space to rent in Hexham?

Chrysalis Club rents rooms for your meetings, events and activities in our light and airy building, conveniently situated close to the centre of Hexham on Corbridge Road. Please get in touch for our current availability.

**Prices from £12 per hour + a  
seasonal utility charge**

For bookings and further details please contact us on  
07760 124539 / 01434 408080  
info@chrysalisclub.org.uk  
FB/Instagram: @chrysalisclubtynedale



**PayPal**  
Giving Fund

Got a PayPal account?



Chrysalis Club  
Tynedale

We would be extremely grateful if you would like make a donation to support our work here at Chrysalis. If you have a PayPal account then please follow the QR Code below to our PayPal Giving Site.



There is also the option on our PayPal Giving Site to support Chrysalis Club Tynedale when you shop online with PayPal. Set us as your favourite charity, and you can choose to donate £1 when you checkout with PayPal.

## Sessions

A spot of flower arranging...I think we have a budding florist on our hands far right: just look at the height, depth and colour!



### Drop-in and Thursday social: second Thursday of the month



Why not pop in for a game of pool or a little crafting on Thursday 11th May? We're open from 10:30 – 12:30 to chat, show you around and answer your questions. Potential new members, people thinking about volunteering for us, carers of people living with dementia or people thinking about running a fundraiser for us are all welcome. It's an opportunity to get a taste of Chrysalis, a cup of coffee and a slice of cake! Our usual Thursday social session will run concurrently as normal.

### Dates for your diary

- Tuesday 16th May - Queens Hall
- Tuesday 23rd May - Walk at Tyne Green
- Friday 26th May - Forum Cinema - The Unlikely Pilgrimage of Harold Fry
- Monday 5th June - Art with Carl von Weiler
- Wednesday 14th June - Art with Carl von Weiler
- Friday 16th June - Visit the Alpacas
- Tuesday 4th July - Beamish
- Thursday 6th July - Summer Tyne Crime

## Carers and After-carers

### Carer Support Group

Carers - would you like to meet with other carers to talk, listen, share information and for mutual support? You are very welcome to attend this group at Chrysalis, Hexham which is supported by Chrysalis staff and volunteers and runs on the first Wednesday of each month 1.45 - 3.15. Please let Mel know if you plan on coming along and we will make sure to provide plenty of cake!



### After-carers' Social and Support Group

We usually meet on the last Friday of the month, often out and about somewhere, for support, lunch and a catch-up chat together. In addition, we are currently trialing a new "joint" session running on a



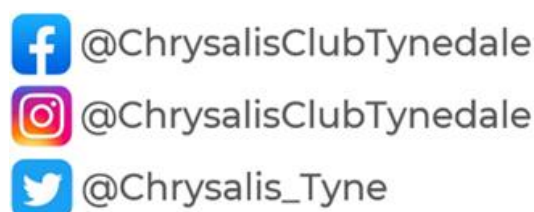
Thursday morning, called "Thursday Social", where you can pop in for a chat and/or join in with the members' craft or sports, or have a game of pool with each other...the more the merrier! Please let Mel know if you fancy giving it a try!

### Carers' Cuppa and Catch-ups

Some of you have expressed that you are keen to connect with other carers/family members in similar situations. If you are bringing a member along to a Chrysalis session, you are most welcome to stay and catch-up with other carers in the 'Quiet Room' if it is free. Just let a member of staff, trustee or volunteer know that you are staying, settle in and we will provide the refreshments!



### Social Media



## And finally...focus on our professional tutors

**Carl von Weiler** - Carl is our current “Artist in residence” and will be running four painting workshops on clouds and trees throughout June and July.



Carl was born in the Netherlands and studied Fine Art in the UK. After 14 years living and working in London he moved with his young family to Hexham in 2004 where he continues to live and work.

He has exhibited extensively nationally and internationally, being commissioned to make work for several public sites, including Court 2001 for Jesus College, Cambridge as well as gallery installations such as Lullaby 2000 for Matt’s Gallery, London. In 2001-2003 he was included in the British Council exhibition, Black Box Recorder that toured worldwide and in 2005 he was commissioned by The Samling Foundation to make Monument in Central Station Metro, Newcastle.

He has been resident artist at Kielder Forest in Northumberland, instigated many projects for schools and local communities, and taught in a number of universities nationally. Many of the projects have had members of the community involved in the making and realisation of the work. Carl has run innovative Art programmes for regional schools, through schemes such as ‘Creative Partnerships’ and the National Gallery ‘Take One Picture’ initiative. He has mentored ‘post 16’ students towards making their own works and worked as part the team supporting Sir Antony Gormley.

Last year Carl set up MetamorphicART, a new ‘not for profit’ company, that seeks to use the powers that Art has, to benefit local communities towards better ‘Health and Wellbeing’. The ambition is to create a bespoke ‘Open Access’ Arts Studio in Hexham which will feed into the existing community groups, all of whom are changing lives positively and adding to the ‘Social Capital’ of our region. His work through MetamorphicART with Chrysalis has created a portable art installation on the theme of “Desert Islands and Driftwood Boats”, currently on display at our Chrysalis.

**Decoy 2, Cragside, Northumberland 2006:** Commissioned to make an outdoor work, whilst renovations took place, at Cragside, Carl took one of the four poster beds from the interior and floated it out on the lake. The work attracted BBC news coverage and was visited by thousands of members of the public.



**SeleFirst School, Angel Project 2010:** Each year The National Gallery in London run a programme called ‘Take One Picture’, which aims to engage children in the Arts, and in 2010 the picture released was Tobias and the Angel by Andrea del Verrocchio. Carl was asked by the school to run a project



based on the picture. Across two months in the autumn term, the school’s gymnasium turned into an artist’s studio, and the children explored many different aspects of the painting. Each pupil created a unique set of large-scale wings, and an ambitious event was staged on the Sele Park in Hexham, where collectively the children took up the shape of Sir Antony Gormley’s Angel of the North, on the hill, in front of a crowd of spectators.